

INTRODUCTION

MODELS COVERED IN THIS MANUAL

MODELS COVERED IN THIS MANUAL

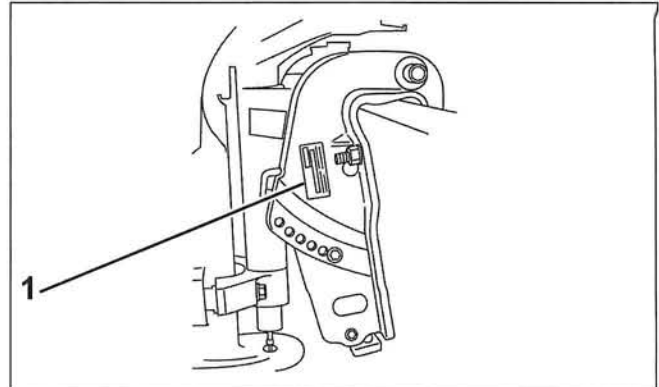
This manual covers service information on *Johnson* 30 HP 4-stroke models. Use this manual together with the proper Parts Catalog for part numbers and for exploded views of the outboard, which are a valuable aid to disassembly and reassembly.

This manual presents the U.S. values and dimensions first and the metric values and dimensions second, inside parentheses ().

Model Number	Start	Shaft	Steering
J30TEL4SDR	Electric	20in.	Tiller
J30PL4SDR	Electric	20in.	Remote

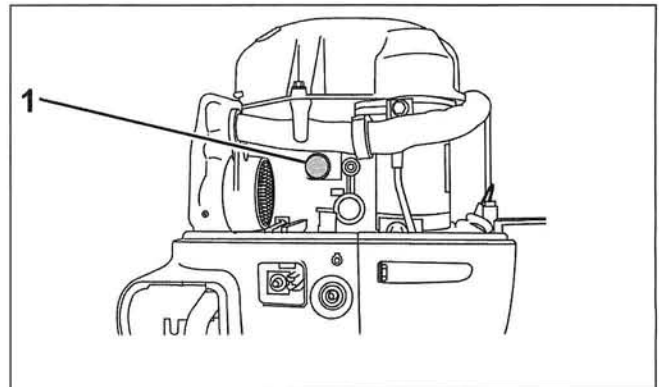
Identifying Model and Serial Numbers

Outboard model and serial numbers are located on the swivel bracket and on the powerhead.



30 HP Swivel Bracket
1. Model and serial number

001968



30 HP Powerhead
1. Serial number

001969